

# TEMPORARY SERVICE FROM UNDERGROUND DISTRIBUTION

BY RAS

DATE 3-13-02

SMTR-2

REV. 6

SHEET 3 OF 7

## ALL ASSEMBLIES TO MEET SCE&G, NEC AND ANY LOCAL CODE REQUIREMENTS

### TO BE FURNISHED, INSTALLED AND MAINTAINED BY SCE&G CO.

7. METER
16. PADMOUNTED TRANSFORMER

### TO BE FURNISHED, INSTALLED AND MAINTAINED BY CUSTOMER

1. WEATHERPROOF ENCLOSURE FOR CIRCUIT BREAKERS (WITH COVER)
2. CONDUIT GALVANIZED STEEL OR SCH. 40 PVC & CONDUIT FITTINGS  
(CONDUIT SIZE: 2" FOR 200 AMP, 3" FOR 400 AMP)
3. 5/8" X 8' GALV. GROUND ROD WITH U.L. APPROVED CLAMP
4. PIPE STRAPS TO BE ATTACHED WITH WOOD SCREWS ONLY
5. NO. 6 COPPER GROUND WIRE (ALUMINUM GROUND WIRE NOT PERMITTED)
8. SERVICE ENTRANCE CONDUCTORS IN CONDUIT TO METER SOCKET  
MINIMUM SIZE #4 AL. OR CU.-MAXIMUM #2 AL. OR CU.
9. RINGLESS METER SOCKET (UL APPROVED) APPROPRIATE AMPE RATING
11. CLOSURE PLATE

#### NOTES:

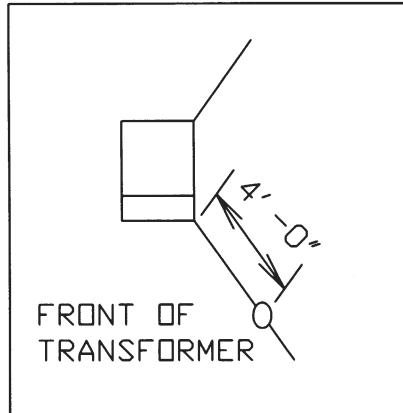
- A. CUSTOMER TO INSTALL POLE ALONG ONE OF THE 2 DIAGONAL LINES FROM THE  
PADMOUNTED TRANSFORMER, RIGHT SIDE FACING TRANSFORMER ONLY.  
POLE NO CLOSER THAN 4 FT. AS SHOWN IN DETAIL "A"
- B. SECONDARY HANDHOLES OR TEMPORARY PEDESTALS MAY BE USED TO CONNECT THE  
SERVICE POLE. THE POLE SHOULD BE INSTALLED NO CLOSER THAN 10 FT. TO THE REAR  
PROPERTY LINE.
- C. CUSTOMER TO TRENCH FROM POLE TO APPROX. 1 FT. FROM THE CORNER OF  
TRANSFORMER PAD, HANDHOLE OR PEDESTAL. TRENCH SHOULD NOT BE CLOSER THAN  
5 FT. TO REAR PROPERTY LINE. TEN FEET OF ADDITIONAL WIRE TO BE PROVIDED BY THE  
CUSTOMER TO ALLOW FOR SCE&G CONNECTION.
- D. ENTIRE ASSEMBLY TO MEET SCE&G, N.E.C. AND ANY LOCAL CODE REQUIREMENTS.
- E. ALL GROUNDING CONDUCTORS SHALL BE SECURELY FASTENED TO THE SURFACE ON  
WHICH IT IS TO BE CARRIED AND PROTECTED FROM PHYSICAL DAMAGE.
- F. CUSTOMER SHALL MAKE ALL CONNECTIONS IN METER BASE AND SWITCHBOX.

**DISTRIBUTION CONSTRUCTION STANDARD  
SOUTH CAROLINA ELECTRIC & GAS CO.**

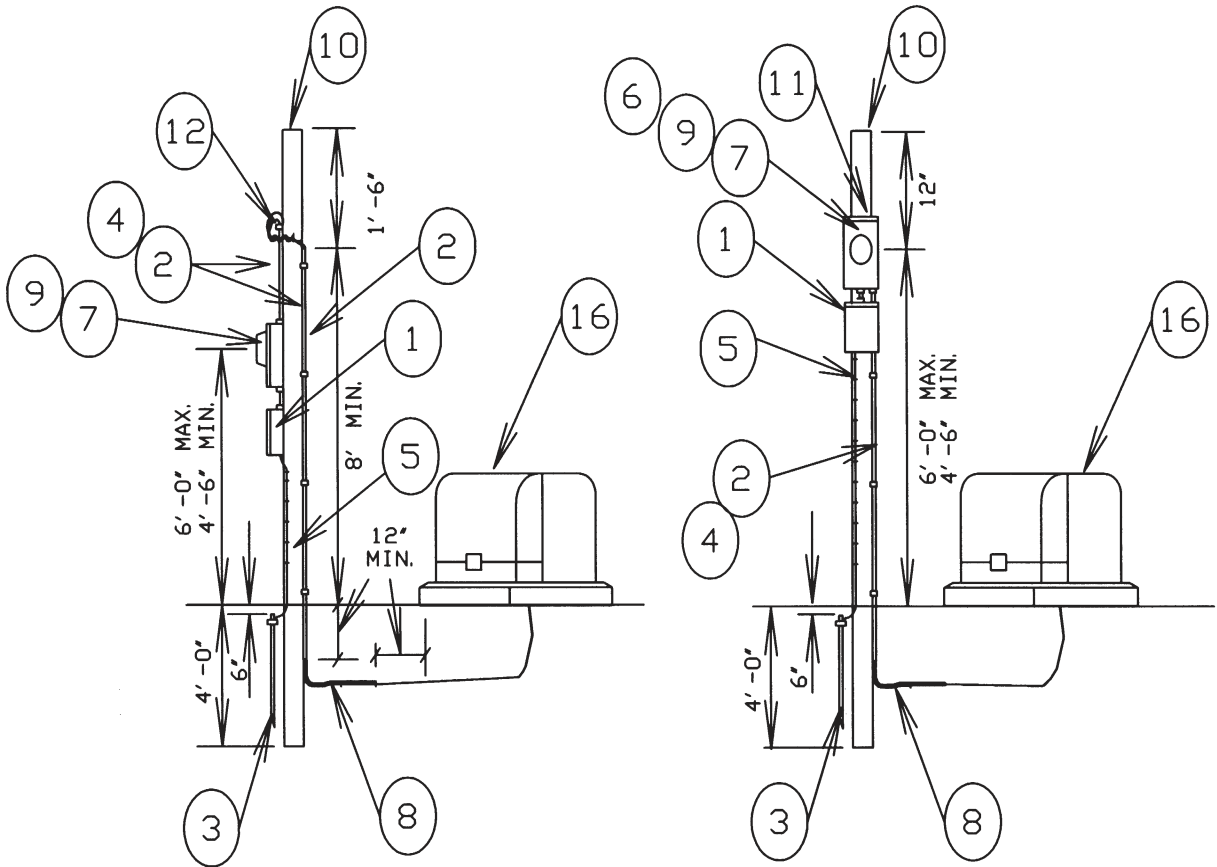
REV. 6 = CHANGED TO TWO PAGE FORMAT & LOCATION OF TEMP. POLE

# TEMPORARY SERVICE FROM UNDERGROUND DISTRIBUTION

BY RAS  
DATE 3-13-02 SMTR-2  
REV. 6 SHEET 4 OF 7



DETAIL "A"



**DISTRIBUTION CONSTRUCTION STANDARD**  
**SOUTH CAROLINA ELECTRIC & GAS CO.**