

MOBILE HOME SERVICE DETAILS

BY RAS

DATE 3-13-02

SMTR-2

REV. 7

SHEET 5 OF 7

ALL ASSEMBLIES TO MEET SCE&G, NEC AND ANY LOCAL CODE REQUIREMENTS

TO BE INSTALLED AND MAINTAINED BY SCE&G CO.

7. METER
17. SPOOL RACK
20. SERVICE CONDUCTORS

TO BE FURNISHED, INSTALLED AND MAINTAINED BY CUSTOMER

1. WEATHERPROOF ENCLOSURE FOR CIRCUIT BREAKERS (WITH COVER)
2. CONDUIT GALVANIZED STEEL OR SCH. 40 PVC & CONDUIT FITTINGS
(CONDUIT SIZE: 2" FOR 200 AMP, 3" FOR 400 AMP)
3. 5/8" X 8' GALV. GROUND ROD WITH U.L. APPROVED CLAMP
4. PIPE STRAPS TO BE ATTACHED WITH WOOD SCREWS ONLY
5. NO. 6 COPPER GROUND WIRE (ALUMINUM GROUND WIRE NOT PERMITTED)
8. SERVICE ENTRANCE CONDUCTORS IN CONDUIT TO METER SOCKET
MINIMUM SIZE #4 AL. OR CU.-MAXIMUM #2 AL. OR CU.
9. METER SOCKET (UL LISTED)
10. 4" X 6" TREATED TIMBER (UNDERGROUND), CLASS 7 TREATED POLE (OVERHEAD)
11. METER SOCKET HUB BLANK COVER
12. WEATHERHEAD
19. CUSTOMER WIRING SYSTEM (4 WIRE)
22. ADDRESS OR LOT NUMBER TO BE PERMANENTLY MARKED ON THE OUTSIDE OF THE
METER SOCKET COVER AND ON THE INSIDE OF METER SOCKET

UNDERGROUND NOTES:

- A. GROUND FAULT PROTECTION AS REQUIRED BY N.E.C.
- B. SOURCE SIDE CONNECTIONS IN METER SOCKET TO BE MADE BY SCE&G AND LOAD SIDE CONNECTIONS TO BE MADE BY CUSTOMER.

OVERHEAD NOTES:

- A. WEATHERHEAD PREFERABLY ABOVE SECONDARY, MAY NOT BE MORE THAN 6" BELOW SPOOL RACK.
- B. POLE MUST BE SUFFICIENT HEIGHT TO PROVIDE 18'-0" CONDUCTOR CLEARANCE OVER DRIVEWAYS AND ROADS.
- C. SOURCE SIDE AND LOAD SIDE CONNECTIONS IN METER SOCKET TO BE MADE BY CUSTOMER.
- D. METER POLE MUST BE INSTALLED AT A POINT NOT MORE THAN 125' FROM SERVICE POLE
- E. CUSTOMER SHALL BE RESPONSIBLE FOR ANCHOR AND GUY IF NECESSARY

GENERAL NOTES:

- A. ALL GROUNDING CONDUCTORS SHALL BE SECURELY FASTENED TO THE SURFACE ON WHICH IT IS TO BE CARRIED AND PROTECTED FROM PHYSICAL DAMAGE.
- B. METER SOCKET TO FACE THE ROAD
- C. GROUND FAULT PROTECTION AS REQUIRED BY N. E. C.
- D. ALL WIRING TO BE IN ACCORDANCE WITH N.E.C., SCE&G CO. AND ANY LOCAL INSPECTION AUTHORITY GUIDLINES

**DISTRIBUTION CONSTRUCTION STANDARD
SOUTH CAROLINA ELECTRIC & GAS CO.**

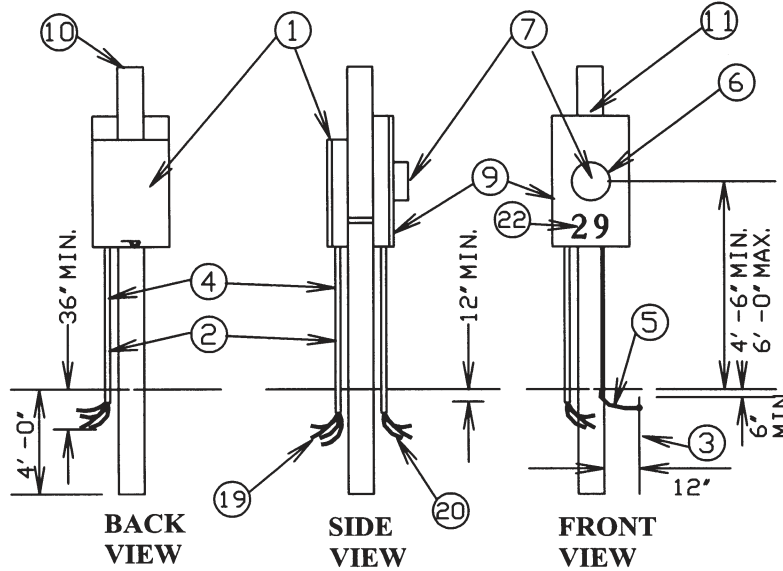
REV. 5 = REVISION REFLECTS COMPANY NO-ISSUE OF SOCKETS
REV. 6 = CHANGED TO TWO PAGE FORMAT
REV. 7 = CHANGED SPOOL RACK RESPONSIBILITY

MOBILE HOME SERVICE DETAILS

BY RAS
 DATE 3-13-02 SMTR-2
 REV. 6 SHEET 6 OF 7

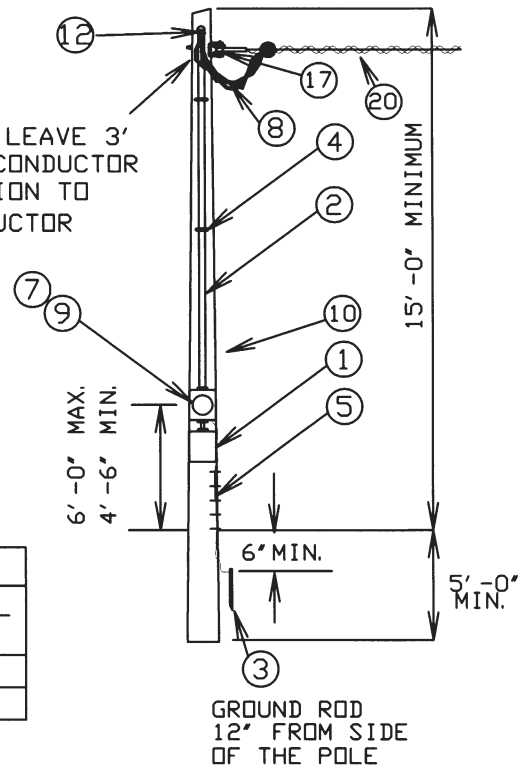
REV. 6 = CHANGED TO TWO PAGE FORMAT

UNDERGROUND SERVICE TO MOBILE HOMES



OVERHEAD SERVICE TO MOBILE HOMES

CUSTOMER TO LEAVE 3' OF SERVICE CONDUCTOR FOR CONNECTION TO SOURCE CONDUCTOR



CLASS 7 ROUND TREATED POLE
 MINIMUM POLE DIMENSIONS

POLE HEIGHT	BUTT DIA.	TIP DIA.	GROUNDLINE DIA.	BURIAL DEPTH
20'	6.2"	4.8"	5.9"	5.0'
25'	7.0"	4.8"	6.5"	5.5'

DISTRIBUTION CONSTRUCTION STANDARD
SOUTH CAROLINA ELECTRIC & GAS CO.